



Engineered Materials Arresting System (EMAS)

Runway Excursion Risk Reduction Toolkit

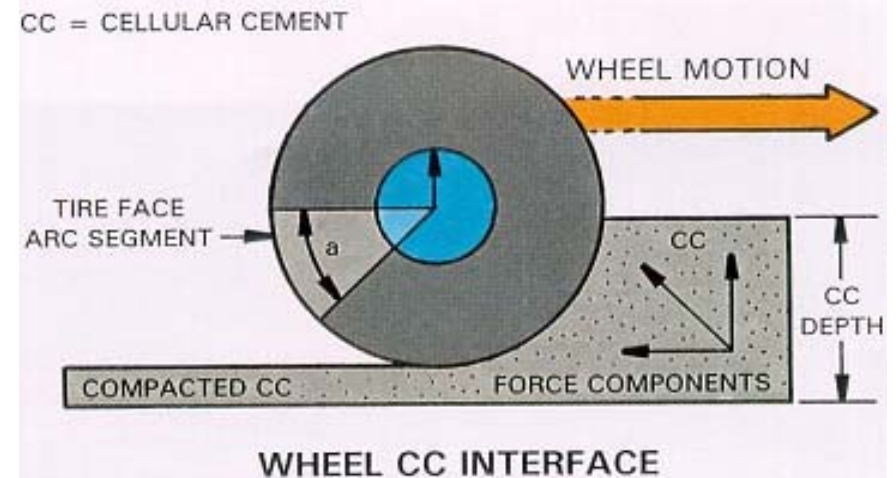
What is EMAS

- A bed of cellular cement blocks placed at the end of a runway to decelerate an overrunning aircraft in an emergency
- Passive system that will reliably & predictably crush under the weight of an aircraft



Theory of Operation

- Material designed to crush during overrun (like driving into quicksand)
- Designed to stop aircraft at entry speed of 70kts or less
- Engineered to avoid damage to aircraft and passengers





To date four overruns successfully arrested with EMAS

May '99: Saab 340 at JFK

May '03: MD-11 at JFK

Jan '05: B747 at JFK

Jul '06: Falcon 900 at Greenville

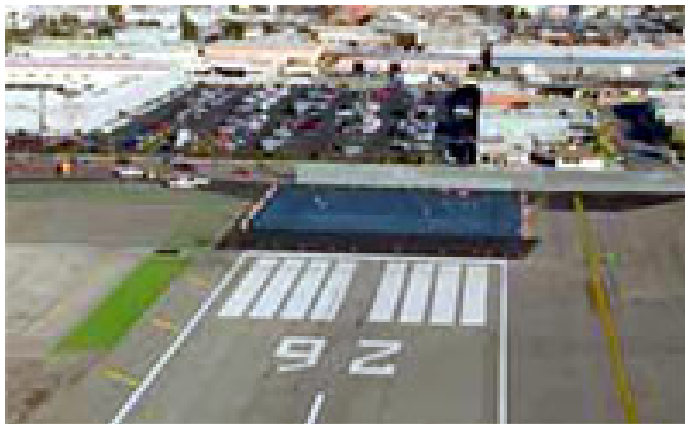
EMAS Installations – United States



Boston Logan



Baton Rouge, LA



Burbank, CA



JFK Int'l, NY



-to represent, lead and serve the airline industry-